



NEW ISSUE

June 1995

EMBARGOED UNTIL 11:30 AM THURSDAY 7 SEPTEMBER 1995

Voluntary Work Australia Preliminary

13000	13001	13002	13003	13004	13005	13006	13007	13008	13009	13010	13011	13012	13013	13014	13015	13016	13017	13018	13019	13020	13021	13022	13023	13024	13025	13026	13027	13028	13029	13030	13031	13032	13033	13034	13035	13036	13037	13038	13039	13040	13041	13042	13043	13044	13045	13046	13047	13048	13049	13050	13051	13052	13053	13054	13055	13056	13057	13058	13059	13060	13061	13062	13063	13064	13065	13066	13067	13068	13069	13070	13071	13072	13073	13074	13075	13076	13077	13078	13079	13080	13081	13082	13083	13084	13085	13086	13087	13088	13089	13090	13091	13092	13093	13094	13095	13096	13097	13098	13099	13100	13101	13102	13103	13104	13105	13106	13107	13108	13109	13110	13111	13112	13113	13114	13115	13116	13117	13118	13119	13120	13121	13122	13123	13124	13125	13126	13127	13128	13129	13130	13131	13132	13133	13134	13135	13136	13137	13138	13139	13140	13141	13142	13143	13144	13145	13146	13147	13148	13149	13150	13151	13152	13153	13154	13155	13156	13157	13158	13159	13160	13161	13162	13163	13164	13165	13166	13167	13168	13169	13170	13171	13172	13173	13174	13175	13176	13177	13178	13179	13180	13181	13182	13183	13184	13185	13186	13187	13188	13189	13190	13191	13192	13193	13194	13195	13196	13197	13198	13199	13200	13201	13202	13203	13204	13205	13206	13207	13208	13209	13210	13211	13212	13213	13214	13215	13216	13217	13218	13219	13220	13221	13222	13223	13224	13225	13226	13227	13228	13229	13230	13231	13232	13233	13234	13235	13236	13237	13238	13239	13240	13241	13242	13243	13244	13245	13246	13247	13248	13249	13250	13251	13252	13253	13254	13255	13256	13257	13258	13259	13260	13261	13262	13263	13264	13265	13266	13267	13268	13269	13270	13271	13272	13273	13274	13275	13276	13277	13278	13279	13280	13281	13282	13283	13284	13285	13286	13287	13288	13289	13290	13291	13292	13293	13294	13295	13296	13297	13298	13299	13300	13301	13302	13303	13304	13305	13306	13307	13308	13309	13310	13311	13312	13313	13314	13315	13316	13317	13318	13319	13320	13321	13322	13323	13324	13325	13326	13327	13328	13329	13330	13331	13332	13333	13334	13335	13336	13337	13338	13339	13340	13341	13342	13343	13344	13345	13346	13347	13348	13349	13350	13351	13352	13353	13354	13355	13356	13357	13358	13359	13360	13361	13362	13363	13364	13365	13366	13367	13368	13369	13370	13371	13372	13373	13374	13375	13376	13377	13378	13379	13380	13381	13382	13383	13384	13385	13386	13387	13388	13389	13390	13391	13392	13393	13394	13395	13396	13397	13398	13399	13400	13401	13402	13403	13404	13405	13406	13407	13408	13409	13410	13411	13412	13413	13414	13415	13416	13417	13418	13419	13420	13421	13422	13423	13424	13425	13426	13427	13428	13429	13430	13431	13432	13433	13434	13435	13436	13437	13438	13439	13440	13441	13442	13443	13444	13445	13446	13447	13448	13449	13450	13451	13452	13453	13454	13455	13456	13457	13458	13459	13460	13461	13462	13463	13464	13465	13466	13467	13468	13469	13470	13471	13472	13473	13474	13475	13476	13477	13478	13479	13480	13481	13482	13483	13484	13485	13486	13487	13488	13489	13490	13491	13492	13493	13494	13495	13496	13497	13498	13499	13500	13501	13502	13503	13504	13505	13506	13507	13508	13509	13510	13511	13512	13513	13514	13515	13516	13517	13518	13519	13520	13521	13522	13523	13524	13525	13526	13527	13528	13529	13530	13531	13532	13533	13534	13535	13536	13537	13538	13539	13540	13541	13542	13543	13544	13545	13546	13547	13548	13549	13550	13551	13552	13553	13554	13555	13556	13557	13558	13559	13560	13561	13562	13563	13564	13565	13566	13567	13568	13569	13570	13571	13572	13573	13574	13575	13576	13577	13578	13579	13580	13581	13582	13583	13584	13585	13586	13587	13588	13589	13590	13591	13592	13593	13594	13595	13596	13597	13598	13599	13600	13601	13602	13603	13604	13605	13606	13607	13608	13609	13610	13611	13612	13613	13614	13615	13616	13617	13618	13619	13620	13621	13622	13623	13624	13625	13626	13627	13628	13629	13630	13631	13632	13633	13634	13635	13636	13637	13638	13639	13640	13641	13642	13643	13644	13645	13646	13647	13648	13649	13650	13651	13652	13653	13654	13655	13656	13657	13658	13659	13660	13661	13662	13663	13664	13665	13666	13667	13668	13669	13670	13671	13672	13673	13674	13675	13676	13677	13678	13679	13680	13681	13682	13683	13684	13685	13686	13687	13688	13689	13690	13691	13692	13693	13694	13695	13696	13697	13698	13699	13700	13701	13702	13703	13704	13705	13706	13707	13708	13709	13710	13711	13712	13713	13714	13715	13716	13717	13718	13719	13720	13721	13722	13723	13724	13725	13726	13727	13728	13729	13730	13731	13732	13733	13734	13735	13736	13737	13738	13739	13740	13741	13742	13743	13744	13745	13746	13747	13748	13749	13750	13751	13752	13753	13754	13755	13756	13757	13758	13759	13760	13761	13762	13763	13764	13765	13766	13767	13768	13769	13770	13771	13772	13773	13774	13775	13776	13777	13778	13779	13780	13781	13782	13783	13784	13785	13786	13787	13788	13789	13790	13791	13792	13793	13794	13795	13796	13797	13798	13799	13800	13801	13802	13803	13804	13805	13806	13807	13808	13809	13810	13811	13812	13813	13814	13815	13816	13817	13818	13819	13820	13821	13822	13823	13824	13825	13826	13827	13828	13829	13830	13831	13832	13833	13834	13835	13836	13837	13838	13839	13840	13841	13842	13843	13844	13845	13846	13847	13848	13849	13850	13851	13852	13853	13854	13855	13856	13857	13858	13859	13860	13861	13862	13863	13864	13865	13866	13867	13868	13869	13870	13871	13872	13873	13874	13875	13876	13877	13878	13879	13880	13881	13882	13883	13884	13885	13886	13887	13888	13889	13890	13891	13892	13893	13894	13895	13896	13897	13898	13899	13900	13901	13902	13903	13904	13905	13906	13907	13908	13909	13910	13911	13912	13913	13914	13915	13916	13917	13918	13919	13920	13921	13922	13923	13924	13925	13926	13927	13928	13929	13930	13931	13932	13933	13934	13935	13936	13937	13938	13939	13940	13941	13942	13943	13944	13945	13946	13947	13948	13949	13950	13951	13952	13953	13954	13955	13956	13957	13958	13959	13960	13961	13962	13963	13964	13965	13966	13967	13968	13969	13970	13971	13972	13973	13974	13975	13976	13977	13978	13979	13980	13981	13982	13983	13984	13985	13986	13987	13988	13989	13990	13991	13992	13993	13994	13995	13996	13997	13998	13999	14000
-------	-------	-------	-------	-------	-------	-------	-------	-------	-------	-------	-------	-------	-------	-------	-------	-------	-------	-------	-------	-------	-------	-------	-------	-------	-------	-------	-------	-------	-------	-------	-------	-------	-------	-------	-------	-------	-------	-------	-------	-------	-------	-------	-------	-------	-------	-------	-------	-------	-------	-------	-------	-------	-------	-------	-------	-------	-------	-------	-------	-------	-------	-------	-------	-------	-------	-------	-------	-------	-------	-------	-------	-------	-------	-------	-------	-------	-------	-------	-------	-------	-------	-------	-------	-------	-------	-------	-------	-------	-------	-------	-------	-------	-------	-------	-------	-------	-------	-------	-------	-------	-------	-------	-------	-------	-------	-------	-------	-------	-------	-------	-------	-------	-------	-------	-------	-------	-------	-------	-------	-------	-------	-------	-------	-------	-------	-------	-------	-------	-------	-------	-------	-------	-------	-------	-------	-------	-------	-------	-------	-------	-------	-------	-------	-------	-------	-------	-------	-------	-------	-------	-------	-------	-------	-------	-------	-------	-------	-------	-------	-------	-------	-------	-------	-------	-------	-------	-------	-------	-------	-------	-------	-------	-------	-------	-------	-------	-------	-------	-------	-------	-------	-------	-------	-------	-------	-------	-------	-------	-------	-------	-------	-------	-------	-------	-------	-------	-------	-------	-------	-------	-------	-------	-------	-------	-------	-------	-------	-------	-------	-------	-------	-------	-------	-------	-------	-------	-------	-------	-------	-------	-------	-------	-------	-------	-------	-------	-------	-------	-------	-------	-------	-------	-------	-------	-------	-------	-------	-------	-------	-------	-------	-------	-------	-------	-------	-------	-------	-------	-------	-------	-------	-------	-------	-------	-------	-------	-------	-------	-------	-------	-------	-------	-------	-------	-------	-------	-------	-------	-------	-------	-------	-------	-------	-------	-------	-------	-------	-------	-------	-------	-------	-------	-------	-------	-------	-------	-------	-------	-------	-------	-------	-------	-------	-------	-------	-------	-------	-------	-------	-------	-------	-------	-------	-------	-------	-------	-------	-------	-------	-------	-------	-------	-------	-------	-------	-------	-------	-------	-------	-------	-------	-------	-------	-------	-------	-------	-------	-------	-------	-------	-------	-------	-------	-------	-------	-------	-------	-------	-------	-------	-------	-------	-------	-------	-------	-------	-------	-------	-------	-------	-------	-------	-------	-------	-------	-------	-------	-------	-------	-------	-------	-------	-------	-------	-------	-------	-------	-------	-------	-------	-------	-------	-------	-------	-------	-------	-------	-------	-------	-------	-------	-------	-------	-------	-------	-------	-------	-------	-------	-------	-------	-------	-------	-------	-------	-------	-------	-------	-------	-------	-------	-------	-------	-------	-------	-------	-------	-------	-------	-------	-------	-------	-------	-------	-------	-------	-------	-------	-------	-------	-------	-------	-------	-------	-------	-------	-------	-------	-------	-------	-------	-------	-------	-------	-------	-------	-------	-------	-------	-------	-------	-------	-------	-------	-------	-------	-------	-------	-------	-------	-------	-------	-------	-------	-------	-------	-------	-------	-------	-------	-------	-------	-------	-------	-------	-------	-------	-------	-------	-------	-------	-------	-------	-------	-------	-------	-------	-------	-------	-------	-------	-------	-------	-------	-------	-------	-------	-------	-------	-------	-------	-------	-------	-------	-------	-------	-------	-------	-------	-------	-------	-------	-------	-------	-------	-------	-------	-------	-------	-------	-------	-------	-------	-------	-------	-------	-------	-------	-------	-------	-------	-------	-------	-------	-------	-------	-------	-------	-------	-------	-------	-------	-------	-------	-------	-------	-------	-------	-------	-------	-------	-------	-------	-------	-------	-------	-------	-------	-------	-------	-------	-------	-------	-------	-------	-------	-------	-------	-------	-------	-------	-------	-------	-------	-------	-------	-------	-------	-------	-------	-------	-------	-------	-------	-------	-------	-------	-------	-------	-------	-------	-------	-------	-------	-------	-------	-------	-------	-------	-------	-------	-------	-------	-------	-------	-------	-------	-------	-------	-------	-------	-------	-------	-------	-------	-------	-------	-------	-------	-------	-------	-------	-------	-------	-------	-------	-------	-------	-------	-------	-------	-------	-------	-------	-------	-------	-------	-------	-------	-------	-------	-------	-------	-------	-------	-------	-------	-------	-------	-------	-------	-------	-------	-------	-------	-------	-------	-------	-------	-------	-------	-------	-------	-------	-------	-------	-------	-------	-------	-------	-------	-------	-------	-------	-------	-------	-------	-------	-------	-------	-------	-------	-------	-------	-------	-------	-------	-------	-------	-------	-------	-------	-------	-------	-------	-------	-------	-------	-------	-------	-------	-------	-------	-------	-------	-------	-------	-------	-------	-------	-------	-------	-------	-------	-------	-------	-------	-------	-------	-------	-------	-------	-------	-------	-------	-------	-------	-------	-------	-------	-------	-------	-------	-------	-------	-------	-------	-------	-------	-------	-------	-------	-------	-------	-------	-------	-------	-------	-------	-------	-------	-------	-------	-------	-------	-------	-------	-------	-------	-------	-------	-------	-------	-------	-------	-------	-------	-------	-------	-------	-------	-------	-------	-------	-------	-------	-------	-------	-------	-------	-------	-------	-------	-------	-------	-------	-------	-------	-------	-------	-------	-------	-------	-------	-------	-------	-------	-------	-------	-------	-------	-------	-------	-------	-------	-------	-------	-------	-------	-------	-------	-------	-------	-------	-------	-------	-------	-------	-------	-------	-------	-------	-------	-------	-------	-------	-------	-------	-------	-------	-------	-------	-------	-------	-------	-------	-------	-------	-------	-------	-------	-------	-------	-------	-------	-------	-------	-------	-------	-------	-------	-------	-------	-------	-------	-------	-------	-------	-------	-------	-------	-------	-------	-------	-------	-------	-------	-------	-------	-------	-------	-------	-------	-------	-------	-------	-------	-------	-------	-------	-------	-------	-------	-------	-------	-------	-------	-------	-------	-------	-------	-------	-------	-------	-------	-------	-------	-------	-------	-------	-------	-------	-------	-------	-------	-------	-------	-------	-------	-------	-------	-------	-------	-------	-------	-------	-------	-------	-------	-------	-------	-------	-------	-------	-------	-------	-------	-------	-------	-------	-------	-------	-------	-------	-------	-------	-------	-------	-------	-------	-------	-------	-------	-------	-------	-------	-------	-------	-------	-------	-------	-------	-------	-------	-------	-------	-------	-------	-------	-------	-------	-------	-------	-------	-------	-------	-------	-------	-------	-------	-------	-------	-------	-------	-------	-------	-------	-------	-------	-------	-------	-------	-------	-------	-------	-------	-------	-------	-------	-------	-------	-------	-------	-------	-------	-------	-------	-------	-------	-------	-------	-------	-------	-------	-------	-------	-------	-------	-------	-------

Statistics

VOLUNTARY WORK NOTES

NEW ISSUE

This publication is a new issue and provides data, for the first time on a national basis, on the numbers and rates of people involved in Voluntary Work.

FORTHCOMING ISSUE

ISSUE

RELEASE DATE

4441.0 *Voluntary Work, Australia* *expected* December 1995

INQUIRIES

For further information about statistics in this publication, and the availability of related unpublished statistics, contact Michael Clarke on (02) 268 4498 or ring any ABS office.

For information about other ABS statistics and services, please contact Information Services Canberra on (06) 252 6627, 252 6007 or any ABS State office.

W. McLennan
Australian Statistician

MAIN FEATURES

VOLUNTEERS JUNE 1995

KEY FIGURES

	Males	Females	Persons
Number of volunteers ('000s)	1 143.0	1 496.6	2 639.7
Volunteer rate (%)	16.7	21.3	19.0
Average time spent volunteering (hours/year)	164.1	164.6	164.4
Total hours spent volunteering (million hours)	187.6	246.3	433.9

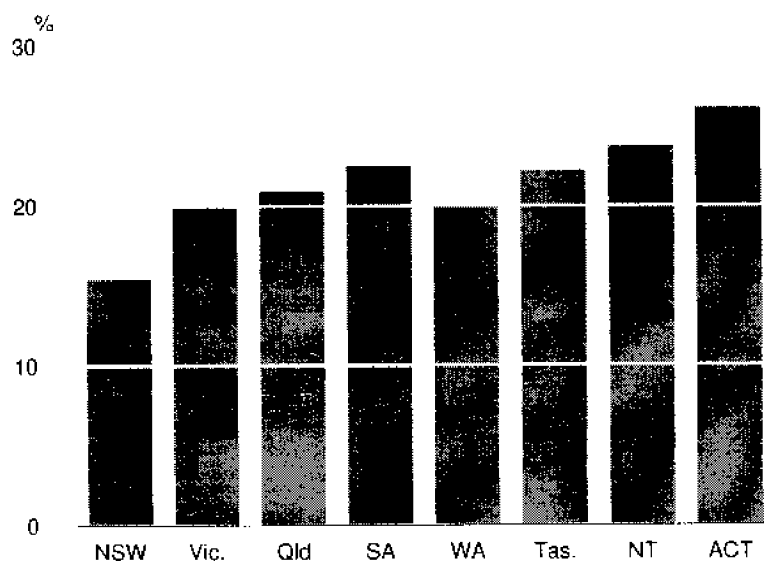
TOTAL VOLUNTEERS

- In Australia, an estimated 2,639,700 persons, representing 19.0% of the civilian population aged 15 years and over, provided voluntary work through an organisation or group during the 12 months ended June 1995.
- These volunteers contributed approximately 433.9 million hours of voluntary work, or an average of 164.4 hours per volunteer over the 12 months.
- The volunteer rate was higher for females than males, being 21.3% and 16.7% respectively.

GEOGRAPHICAL COMPARISONS

- The volunteer rate varied markedly across States and Territories, from 15.4% in NSW to 26.1% in the ACT.

VOLUNTEER RATE BY STATE



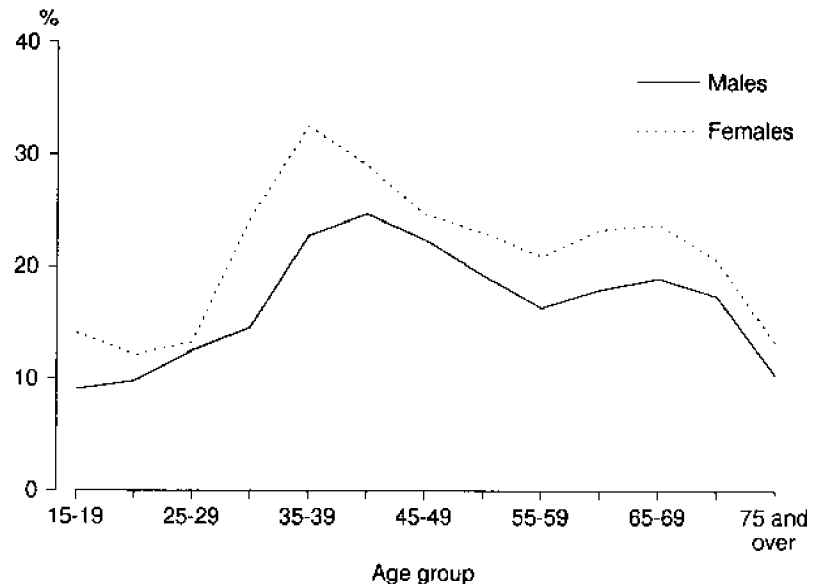
- People were more likely to volunteer if they lived outside a capital city. The volunteer rate was 16.2% for capital cities compared with 24.0% outside capital cities. The lowest volunteer rate, 12.2%, occurred in Sydney. The Balance of South Australia (outside Adelaide) had the highest rate at 32.7%.
- In all State and Territories, the volunteer rate was higher for females than males.

MAIN FEATURES

AGE OF VOLUNTEERS

- The pattern of volunteer involvement varied with age and the life stage of the volunteer. The volunteer rate ranged from 11.2% for 15–24 year olds, to 27.4% for the 35–44 year age group.

VOLUNTEER RATE BY AGE



- The average number of hours contributed by each volunteer tended to increase steadily with age up to the 65–74 year age group with these volunteers performing an average of 228.2 hours of voluntary work in the past year.

NATURE OF ORGANISATIONS WORKED FOR

- Four types of organisations accounted for nearly 80% of all hours of voluntary work. These were Welfare/community (24.4%), Sport/recreation/hobby (24.1%), Religious (16.3%), and Education/training/youth development (14.1%). These four types of organisations were also the largest in terms of proportion of volunteers.
- The highest average hours per volunteer for males were contributed to religious organisations (159.1 hours), Foreign/International organisations (148.9 hours) and Arts/culture organisations (147.8 hours).
- For females, Environment/animal welfare organisations, Religious organisations and Arts/culture organisations were where volunteers spent the greatest amount of their time on average (169.2 hours, 146.3 hours and 141.4 hours respectively).

ACTIVITIES PERFORMED

- Fundraising was the most common activity for female volunteers (49.6%), followed by Preparing/serving food (39.6%) and Management/committee work (36.7%).
- The predominant activities performed by male volunteers were Management/committee work (46.2%), Fundraising (42.4%), and Repairs/maintenance/gardening (30.4%).

1 VOLUNTEERS¹: STATES, TERRITORIES AND MAJOR STATISTICAL REGIONS BY SEX, AUSTRALIA, JUNE 1995

States, Territories and Major Statistical Regions	Males			Females			Persons			
	Number '000s	Volunteer rate ² %	Average time ¹ per volunteer hours	Number '000s	Volunteer rate ² %	Average time ¹ per volunteer hours	Number '000s	Volunteer rate ² %	Average time ¹ per volunteer hours	Total hours ¹ million
New South Wales										
Sydney	147.0	10.1	153.7	213.8	14.2	144.5	360.8	12.2	148.2	53.5
Balance of NSW	157.1	18.1	148.2	210.4	23.6	182.1	367.5	20.9	167.6	61.6
Total	304.1	13.1	150.9	424.2	17.7	163.1	728.4	15.4	158.0	115.1
Victoria										
Melbourne	174.7	14.1	148.0	238.5	18.6	144.0	413.2	16.4	145.7	60.2
Balance of Vic.	127.9	26.5	155.5	156.8	31.6	166.2	284.6	29.1	161.4	45.9
Total	302.6	17.6	151.1	395.2	22.2	152.8	697.8	20.0	152.1	106.1
Queensland										
Brisbane	103.5	18.2	203.1	135.3	22.8	168.5	238.8	20.6	183.5	43.8
Balance of Qld	124.6	18.4	169.3	161.3	24.1	178.7	285.9	21.3	174.6	49.9
Total	228.1	18.3	184.7	296.6	23.5	174.0	524.7	20.9	178.7	93.7
South Australia										
Adelaide	69.5	16.6	196.9	93.5	21.4	185.1	163.0	19.0	190.1	31.0
Balance of SA	44.1	29.4	158.5	52.7	36.0	164.5	96.8	32.7	161.8	15.7
Total	113.6	20.0	182.0	146.2	25.1	177.7	259.8	22.5	179.6	46.7
Western Australia										
Perth	68.5	14.3	188.4	93.9	19.0	179.3	162.4	16.7	183.2	29.7
Balance of WA	48.2	26.6	166.0	51.1	31.1	161.4	99.4	28.8	163.6	16.3
Total	116.7	17.7	179.2	145.0	22.1	173.0	261.8	19.9	175.7	46.0
Tasmania										
Hobart	15.0	20.8	155.6	14.8	20.0	147.6	29.7	20.4	151.6	4.5
Balance of Tas.	22.3	21.2	157.4	26.9	25.6	178.0	49.2	23.4	168.6	8.3
Total	37.3	21.1	156.6	41.6	23.3	167.2	78.9	22.2	162.2	12.8
Northern Territory										
Australian Capital Territory	14.0	22.6	185.0	14.8	24.8	184.9	28.8	23.7	185.0	5.3
Total	26.6	23.7	145.2	32.9	28.4	132.1	59.5	26.1	137.9	8.2
Australia										
Capital cities ³	604.9	13.9	169.1	822.6	18.3	156.4	1 427.5	16.2	161.8	231.0
Balance of Australia ⁴	538.1	21.3	158.6	674.0	26.6	174.5	1 212.2	24.0	167.5	203.0
Total	1 143.0	16.7	164.1	1 496.6	21.3	164.6	2 639.7	19.0	164.4	433.9

¹ In the preceding 12 months.

² See Explanatory Notes for definition.

³ State capitals and all of Australian Capital Territory.

⁴ Balance of States and all of Northern Territory.

2 VOLUNTEERS¹: AGE BY SEX, AUSTRALIA, JUNE 1995

Age	Males			Females			Persons			
	Number '000s	Volunteer rate ² %	Average time ¹ per volunteer hours	Number '000s	Volunteer rate ² %	Average time ¹ per volunteer hours	Number '000s	Volunteer rate ² %	Average time ¹ per volunteer hours	Total hours ¹ million
15-24 years	127.9	9.5	127.4	171.1	13.0	108.5	298.9	11.2	116.6	34.9
25-34 years	188.8	13.6	139.7	267.8	19.0	131.5	456.5	16.3	134.9	61.6
35-44 years	320.7	23.8	148.5	423.2	30.9	144.2	743.9	27.4	146.1	108.7
45-54 years	236.7	21.0	172.1	262.0	24.0	179.2	498.8	22.5	175.8	87.7
55-64 years	129.0	17.1	207.6	164.3	22.1	223.0	293.3	19.6	216.2	63.4
65-74 years	109.1	18.3	217.8	151.7	22.3	235.7	260.8	20.5	228.2	59.5
75 years and over	30.9	10.4	196.5	56.6	13.3	215.0	87.5	12.1	208.5	18.2
Total	1 143.0	16.7	164.1	1 496.6	21.3	164.6	2 639.7	19.0	164.4	433.9

¹ In the preceding 12 months.

² See Explanatory Notes for definition.

3 VOLUNTEERS¹: NATURE OF ORGANISATION BY SEX, AUSTRALIA, JUNE 1995

Nature of organisation	Males		Females		Persons				
	Number ² '000s	Average time ¹ per volunteer hours	Number ² '000s	Average time ¹ per volunteer hours	Number ² '000s	Proportion of volunteers ² %	Average time ¹ per volunteer hours	Total hours ¹ million	Proportion of hours ¹ %
Sport/recreation/hobby	476.7	133.6	351.7	116.4	828.4	31.4	126.3	104.6	24.1
Welfare/community	308.4	131.1	476.0	137.1	784.5	29.7	134.7	105.7	24.4
Health	49.9	138.0	131.9	129.9	181.7	6.9	132.1	24.0	5.5
Emergency services	96.5	108.5	31.8	134.5	128.3	4.9	115.0	14.8	3.4
Education/training/youth development	191.4	73.1	476.7	98.9	668.1	25.3	91.5	61.1	14.1
Religious	184.8	159.1	281.4	146.3	466.2	17.7	151.4	70.6	16.3
Environmental/animal welfare	50.2	85.7	48.0	169.2	98.2	3.7	126.5	12.4	2.9
Business/professional/union	56.2	82.0	30.0	108.1	86.2	3.3	91.1	7.9	1.8
Law/justice/political	24.7	81.8	19.3	89.5	43.9	1.7	85.2	3.7	0.9
Arts/culture	41.1	147.8	66.9	141.4	108.0	4.1	143.9	15.5	3.6
Foreign/international	6.7	148.9	13.3	118.3	19.9	0.8	128.6	2.6	0.6
Other	17.5	130.6	22.7	114.9	40.1	1.5	121.7	4.9	1.1
Not collected ³	42.3	58.6	58.6	62.5	100.9	3.8	60.1	6.1	1.4
Total	1 143.0	164.1	1 496.6	164.6	2 639.7	100.0	164.4	433.9	100.0

¹ In the preceding 12 months.

² As a volunteer can work for more than one organisation, the figures for individual types of organisation will not add to the total.

³ When a volunteer worked for more than three organisations in the preceding 12 months, nature of organisation was only collected for the three organisations for which the volunteer worked the most hours.

4 VOLUNTEERS¹: ACTIVITY BY SEX, AUSTRALIA, JUNE 1995

Activity ²	Males		Females		Persons	
	Number '000s	Proportion of volunteers %	Number '000s	Proportion of volunteers %	Number '000s	Proportion of volunteers %
Fundraising	484.6	42.4	742.9	49.6	1 227.4	46.5
Management/committee work	528.6	46.2	549.2	36.7	1 077.8	40.8
Day to day organising/co-ordinating/supervising	291.6	25.5	348.9	23.3	640.5	24.3
Preparing/serving food	176.4	15.4	592.8	39.6	769.2	29.1
Administration/clerical work	260.8	22.8	342.0	22.8	602.7	22.8
Teaching/instruction	262.4	23.0	437.4	29.2	699.8	26.5
Transporting people/goods	242.7	21.2	299.2	20.0	541.9	20.5
Repairs/maintenance/gardening	347.9	30.4	133.0	8.9	481.0	18.2
Coaching/refereeing/judging	235.6	20.6	185.0	11.0	400.6	15.2
Recruiting	152.8	13.4	112.7	7.5	265.5	10.1
Lobbying/advocacy/policy research	110.4	9.7	89.1	6.0	199.4	7.6
Performing/media production	136.3	11.9	169.9	11.4	306.2	11.6
Search & rescue/first aid/ fire fighting	117.5	10.3	49.7	3.3	167.2	6.3
Befriending/supportive listening/counselling	160.3	14.0	305.6	20.4	465.9	17.7
Providing information	256.6	22.5	278.2	18.6	534.8	20.3
Personal care/assistance	103.8	9.1	196.2	13.1	300.0	11.4
Protecting the environment	92.7	8.1	53.4	3.6	146.1	5.5
Guiding tours (museums, galleries etc)	30.7	2.7	56.1	3.8	86.9	3.3
Other	85.6	7.5	133.6	8.9	219.1	8.3
Total³	1 143.0	100.0	1 496.6	100.0	2 639.7	100.0

¹ In the preceding 12 months.

² When a volunteer worked for more than three organisations in the preceding 12 months, activity was only collected for the three organisations for which the volunteer worked the most hours.

³ As a volunteer can participate in more than one activity, the figures for individual activities will not add to the total.

EXPLANATORY NOTES

INTRODUCTION

1 This publication contains results from a survey of Voluntary Work which was conducted throughout Australia in June 1995 as a supplementary topic of the ABS Monthly Population Survey (MPS).

2 Information was collected from individuals about the types of organisation volunteered for, voluntary activities performed, time spent volunteering, perceived benefits of volunteering and reasons for volunteering.

3 The MPS was conducted during the two weeks commencing Monday, 12 June 1995.

4 Information was sought from approximately 56,000 persons who responded to the MPS, of whom about 54,500 (97%) responded to the supplementary topic.

SCOPE

5 The survey was conducted via interviews for all persons aged 15 years and over who had undertaken voluntary work in the last 12 months, except:

- members of the permanent defence forces;
- certain diplomatic personnel of overseas governments, customarily excluded from censuses and surveys;
- overseas residents in Australia;
- members of non-Australian defence forces (and their dependants) stationed in Australia;
- residents of some non-private dwellings such as hospitals and jails (included in the MPS); and
- boarding school pupils.

DEFINITIONS

6 For the purposes of this survey, a *volunteer* is someone who willingly gives unpaid help, in the form of time, service or skills, through an organisation or group. An organisation or group is any body with a formal structure. It may be as large as a national charity or as small as a local book club. Purely ad hoc, informal and temporary gatherings of people do not constitute an organisation.

7 *Volunteer rate*: For any group, the volunteer rate is the number of volunteers expressed as a percentage of the population aged 15 years and over in the same group.

8 The following were *included* as *voluntary work* for the scope of this survey:

- work for political parties or trade unions;
- attendance at meetings where decisions are made, even if the person is not an office holder;
- unpaid work which is recognised as voluntary work for an organisation for which the volunteer is also a paid employee;

- attendance at self-help group meetings which provide mutual support to members; and
- unpaid work carried out as part of a labour market program.

EXCLUSIONS

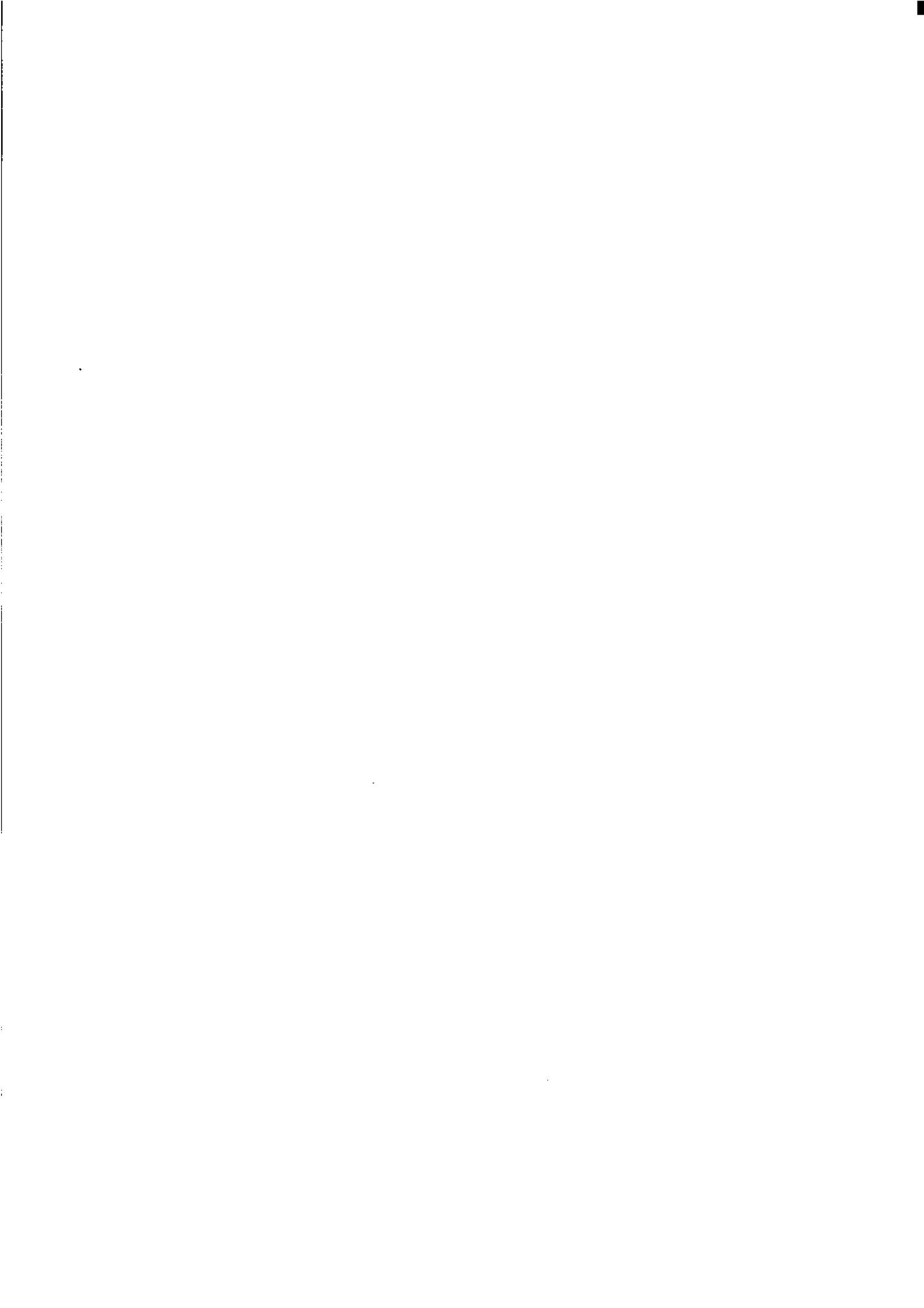
9 The following were *excluded* as voluntary work for the scope of this survey:

- voluntary work done overseas;
- bartering systems, babysitting co-ops;
- unpaid work for a family business;
- donating money, goods or blood;
- time spent training for a volunteer position, or as a pre-requisite for involvement in voluntary work;
- belonging to an organisation but not doing voluntary work for it;
- attending church, fundraising functions or school concerts unless some unpaid work, for example taking up a collection, selling tickets or food, is involved;
- unpaid work done for one's own employer, in the form of taking work home or doing unpaid overtime, which is required or expected of the employee as part of their paid employment, or which the employee chooses to do out of a sense of obligation;
- unpaid work completed as a compulsory requirement of either a formal education course, such as practice teaching by trainee teachers or a community service order;
- travel time to and from the location of voluntary work; and
- time spent 'on-call' (e.g. a volunteer for the bush fire brigade who is on call if there is a likelihood of fire).

RELATED PUBLICATIONS

10 Other ABS publications which may be of interest include:

- *Tasmanian Statistical Indicators, June 1994* (1303.6)
- *Unpaid Work and the Australian Economy, 1992* (5240.0)
- *How Australians Use their Time, 1992* (4153.0)
- *Community and Volunteer Work, South Australia, 1988* (4402.4)
- *Voluntary Community Work, New South Wales, Preliminary, 1986* (4403.1)





For more information ...

The ABS publishes a wide range of statistics and other information on Australia's economic and social conditions. Details of what is available in various publications and other products can be found in the *ABS Catalogue of Publications and Products* available at all ABS Offices (see below for contact details).

Information Consultancy Service

Information tailored to special needs of clients can be obtained from the Information Consultancy Service available at ABS Offices (see Information Inquiries below for contact details).

ABS Products

A large number of ABS products is available from ABS bookshops (see below Bookshop Sales for contact details). The ABS also provides a subscription service — you can telephone the ABS Subscription Service Australia wide toll free on 1800 02 0608.

National Dial-a-Statistic Line

0055 86 400

(Steadycom P/L: premium rate 25c/21 4 secs.)

This number gives 24-hour access, 365 days a year, for a range of statistics.

Electronic Services

A large range of data is available via on-line services, diskette, magnetic tape, tape cartridge and CD ROM. For more details about these electronic data services contact any ABS Office (see below) or e-mail us at:

Keylink	STAT.INFO/ABS
X.400	(C:AU,A:TELMEMO,O:ABS,SN:INFO,FN:STAT)
Internet	STAT.INFO@ABS. TELEMEMO.AU or

you can visit us on Internet at: <http://www.statistics.gov.au>

Sales and Inquiries

Regional Offices	Information Inquiries	Bookshop Sales
SYDNEY (02)	268 4611	268 4620
MELBOURNE (03)	9615 7755	9615 7829
BRISBANE (07)	3222 6351	3222 6350
PERTH (09)	360 5140	360 5307
ADELAIDE (08)	237 7100	237 7582
HOBART (002)	20 5800	20 5800
CANBERRA (06)	252 6627	207 0326
DARWIN (089)	43 2111	43 2111
National Office		
ACT (06)	252 6007	008 020 608



Information Services, ABS, PO Box 10, Belconnen ACT 2616

© Commonwealth of Australia 1995

Recommended retail price: \$10.00



2444000001953
ISBN 0 642 20777 1